



Treatment diagram

Floor level

1

Treat via existing holes

Crossmember behind engine

Illustration nr. 3

Illustration nr. 4

Illustration nr. 5

Engine compartment:
Cowl:
Treat via existing holes. (treat with caution) Remove cover plates in engine compartment. Treat on top of longitudinal member, under battery, airfilter body and ABS distributor. See fig 3, 4 and 5. Treat top member in wing.

2

Bonnet lid:
Treat via existing holes behind lining.

3

Top member in right front wing:
Treat via existing hole.

9

A-pillar and front door:
A-pillar:
Treat via 3 drilled holes.
Front door:
Remove cover plate by side mirror. Treat via existing holes.

10

Rear door:
Treat via 5 drilled holes. 3rd drill hole is to be drilled below childproof locking device. See fig 11. for correct drilling of top member.

11

Rear door top:
Fig: drilling of top member.

12

B-pillar:
Drill 1 hole by screw for door hinge.

4

Top member in wing left side:
Treat via 1 drilled hole.

6

Illustration nr. 7

2 cm.

Front door:
Treatment via 4 drilled holes. 3rd drill hole is drilled 2 cm below screw for lock mounting. See fig 7 for correct drilling of top member.

7

7 cm +/- 1 cm.

Front door top:
Drill 2 holes for treatment of top member. Keep 2nd drill hole within level.

5

Top member and auxiliary member:
Treat via existing holes.

8

Panels Remove panel plates by front and rear door.
Treat outer panel via existing holes.

13

C-pillar and rear wing:
Treatment via 4 drilled holes.

14

Rear wing:
Remove tail light. Treat via existing holes for clips.

16

Rear panel:
Remove cover plate. Treat via 2 drilled holes as well as via 2 existing holes.

15

Rear wing from boot:
Remove existing lug. Caution when treating via existing holes.

17

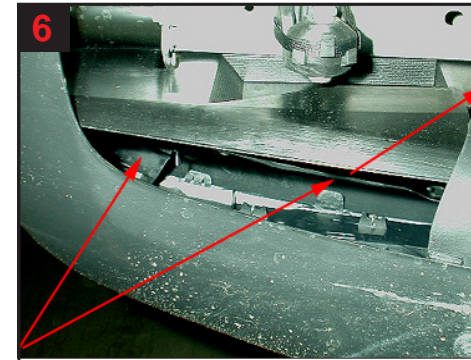
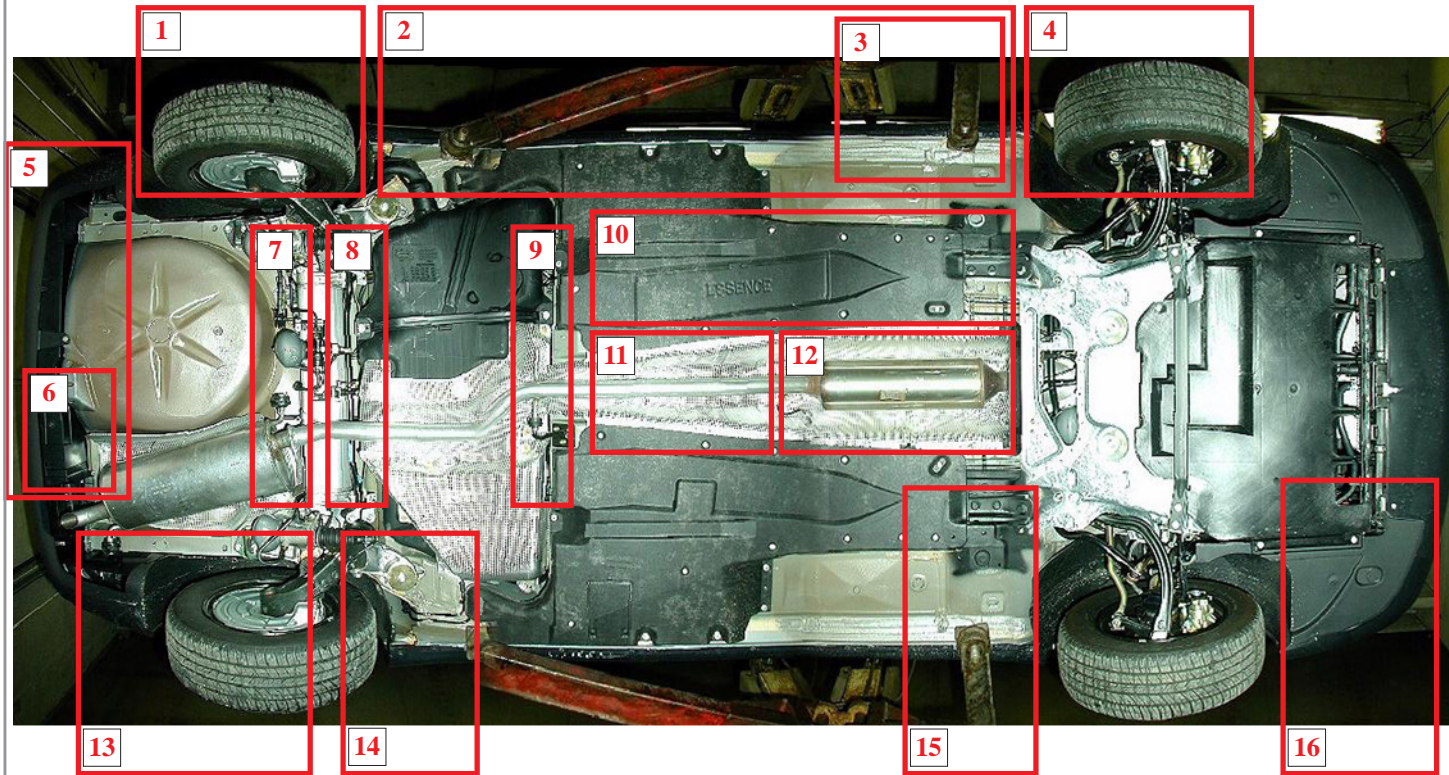
Tailgate:
3 drill holes for correct treatment. All drill holes for treatment with lance.



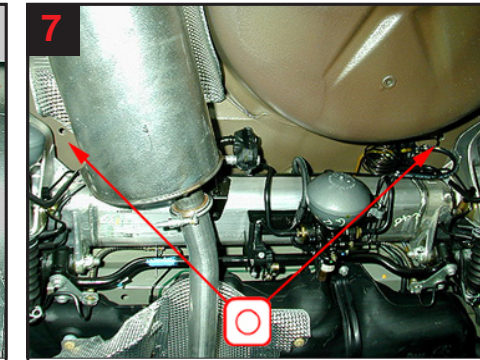
Treatment diagram

Underside

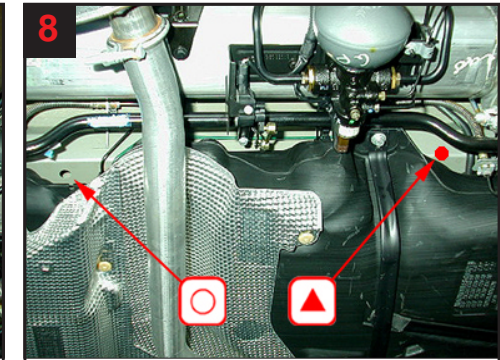
Overview underside



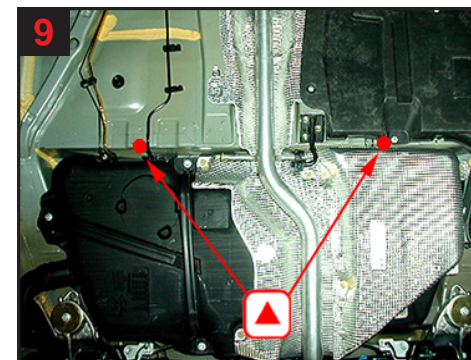
6
Rear wing:
Part treatment in over the liner via existing clearance.



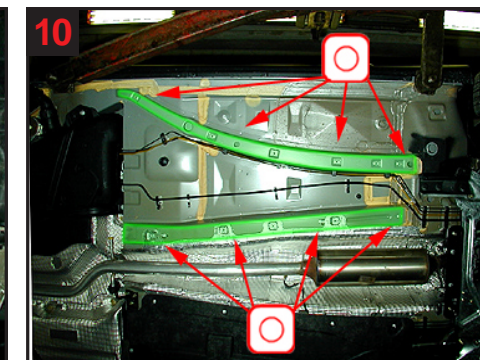
7
Cross member above rear axle assembly:
Treat via existing holes.



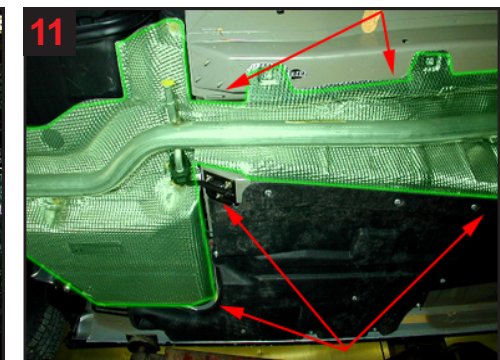
8
Cross member before tank:
Drill 1 hole right side and use existing hole left side.



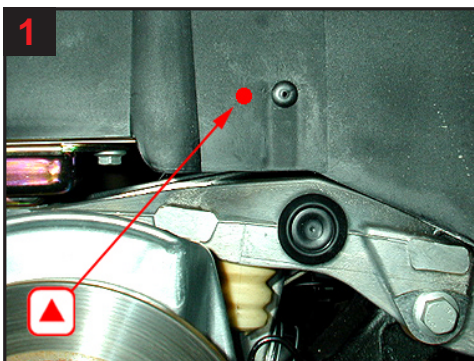
9
Longitudinal member after tank:
Drill 2 holes for correct treatment.



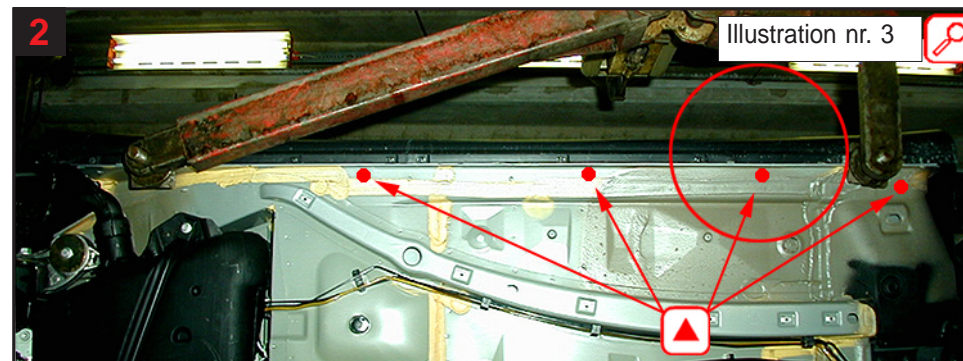
10
Longitudinal members centre:
Treat via existing holes.



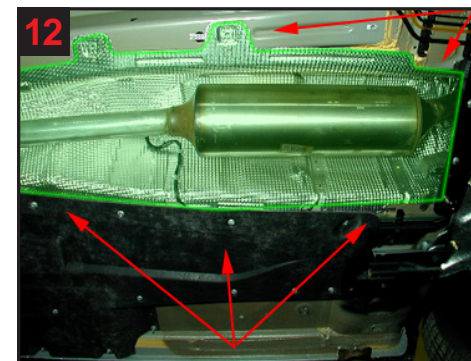
11
Cover plate for exhaust rear:
Treat around and behind where possible.



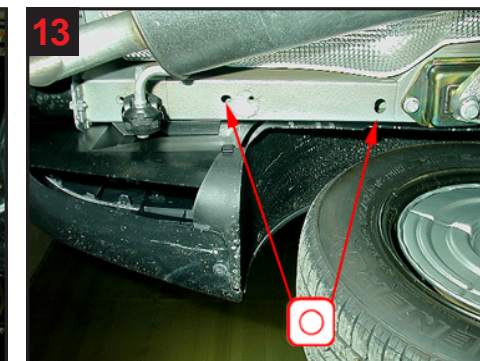
1
Wheel arch rear:
Drill 1 hole by clips for wheel arch liner and behind it where possible.



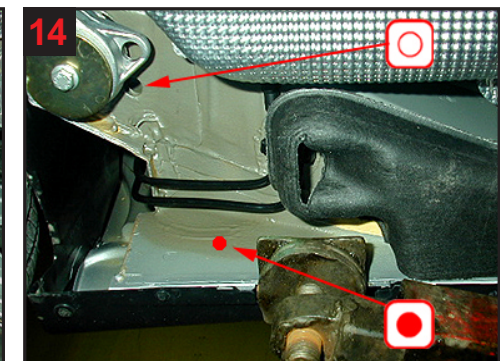
2
Panels:
4 drill holes to treat inner panel (outer panel from floor level). See fig 3 for correct drilling level.



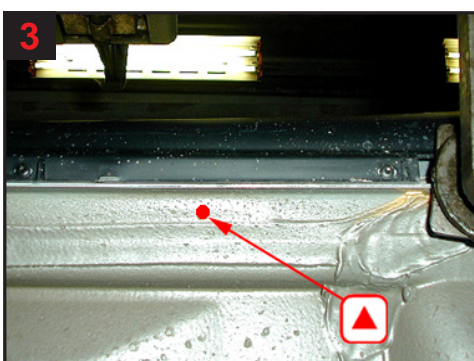
12
Cover plate for exhaust front:
Treat behind and around it.



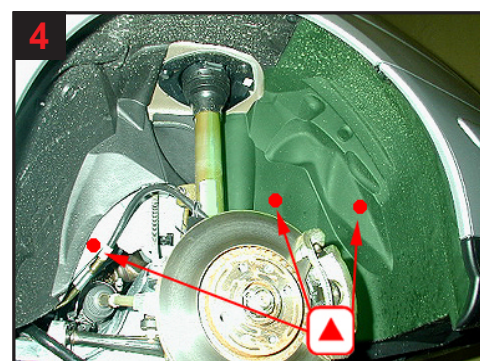
13
Longitudinal member rear:
Treat via existing holes.



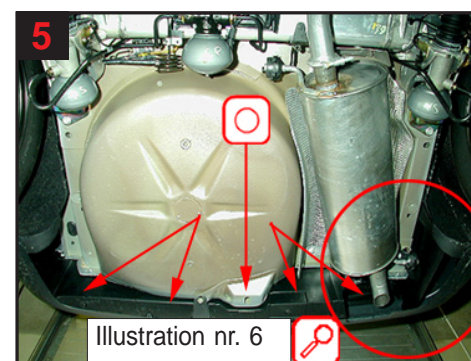
14
Longitudinal member after wheel arch rear:
Correct treatment via 1 drilled hole and via existing hole.



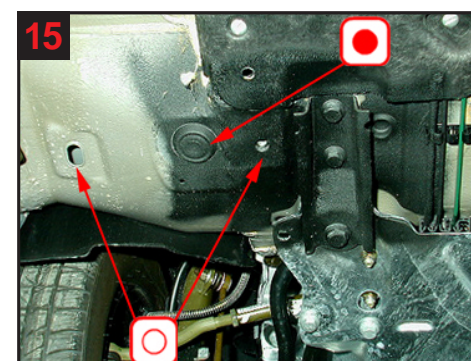
3
Panel:
Fig: drilling at correct level.



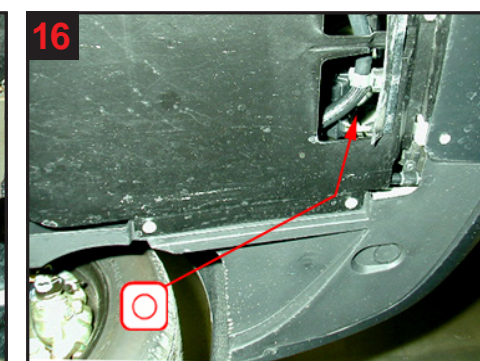
4
Wheel arch front: Remove front part of wheel arch liner. Treat via 3 drilled holes in longitudinal member.



5
Rear panel and reinforcement:
Treat via existing holes. See fig 6 for part treatment of rear wing.



15
Front auxiliary member:
Treat via plugged and existing holes.



16
Longitudinal member front:
Treat via existing holes.