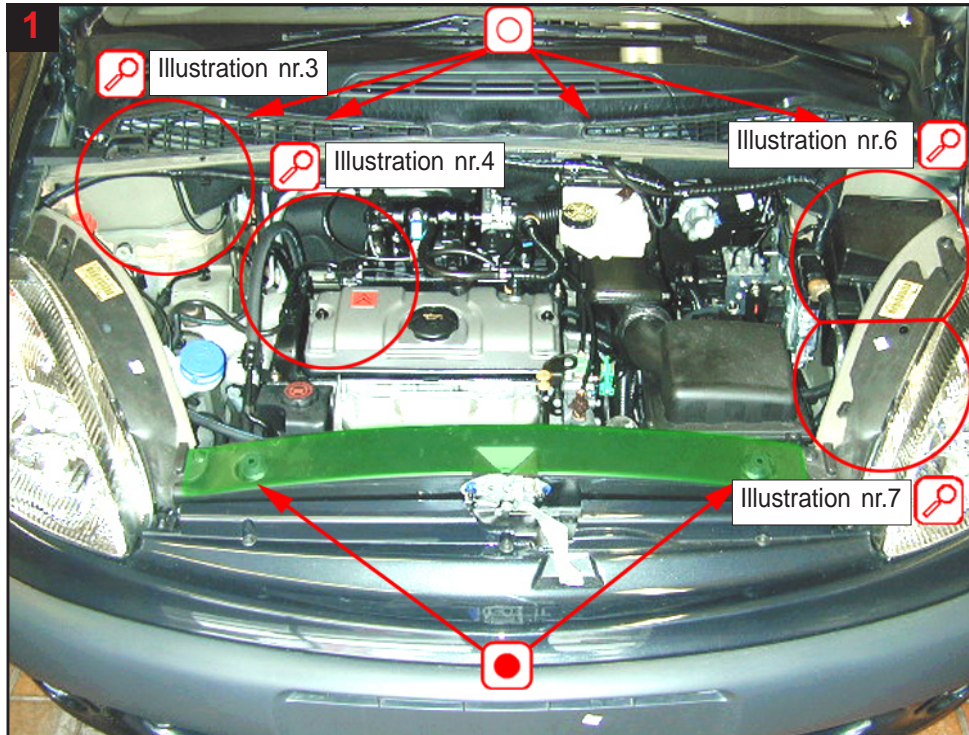


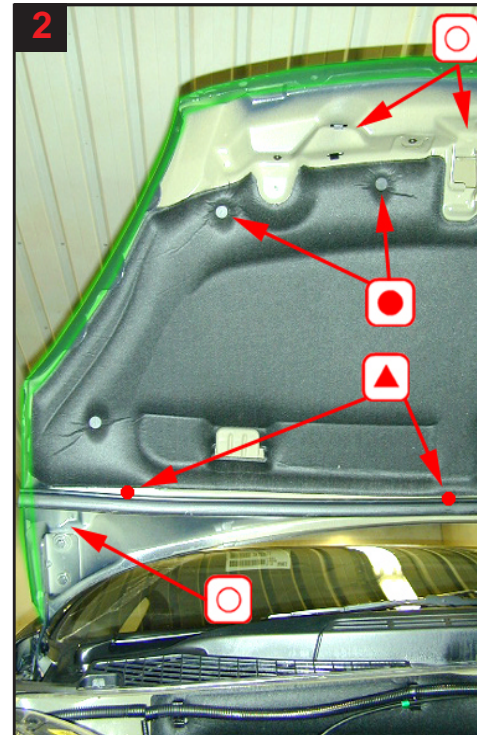


Treatment diagram

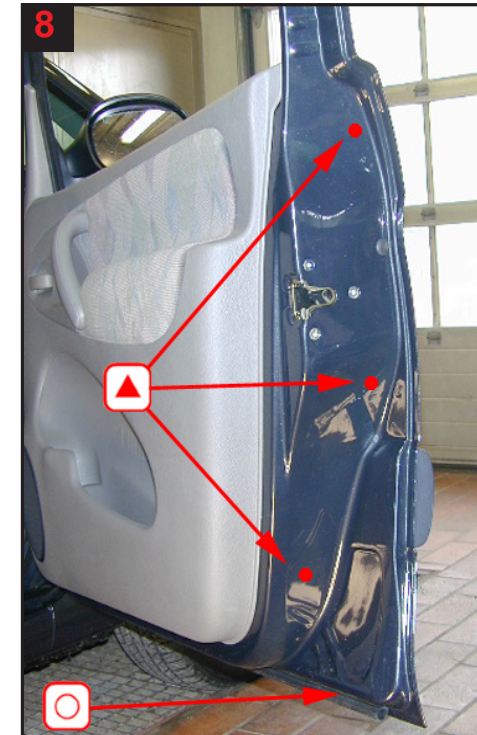
Floor level



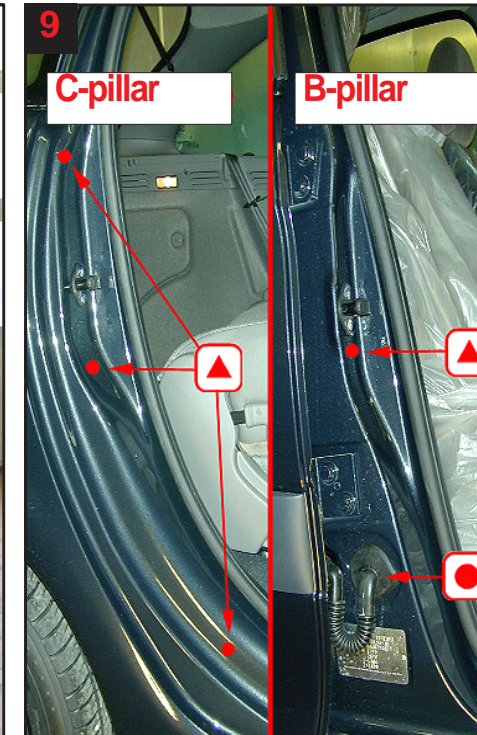
1
Engine compartment:
Cowl: Treat via existing holes. (notice pollen filter right side - treat with caution) Treat console for engine suspension on right side, under headlamps, behind fusebox and under airfilter body. See fig 4 for treatment around spring strut. See fig 4 for treatment of member behind engine. See fig 6 for treatment of top members in front wing. See fig 7 for treatment of longitudinal members.



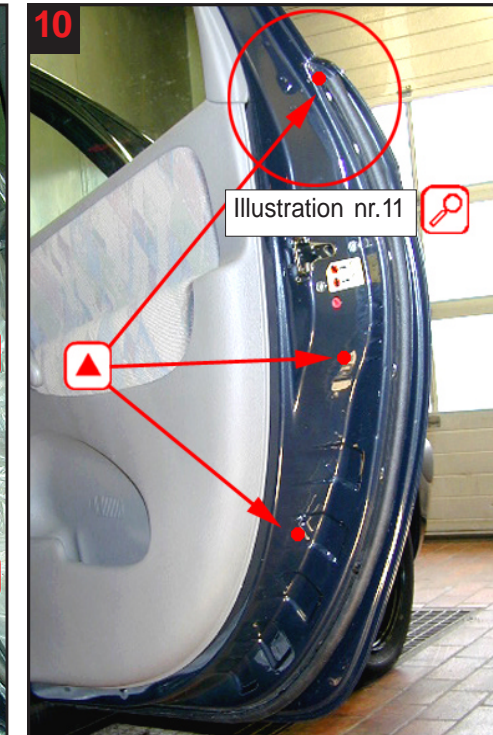
2
Bonnet lid:
Front:
Treat via existing and plugged holes. By windshield:
Drill 3 holes under rubber strip and existing hole by hinge. Treat panel flange all round.



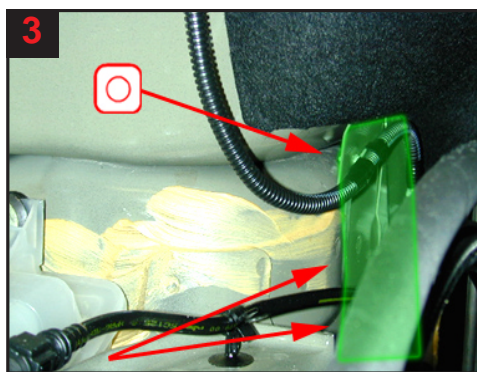
8
Front door:
Treat via 3 drilled holes and existing drain hole rear.



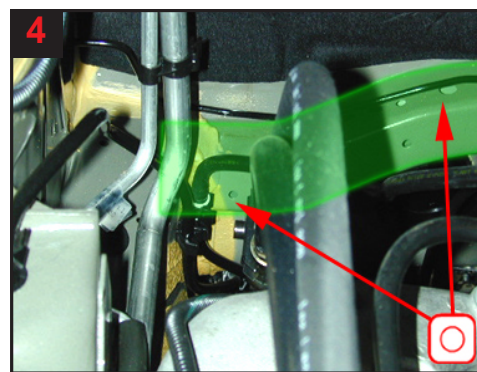
9
C-pillar:
Treat via 3 drilled holes.
B-pillar:
Treat via 1 drilled hole under lock mounting and existing plugged hole (grommet).



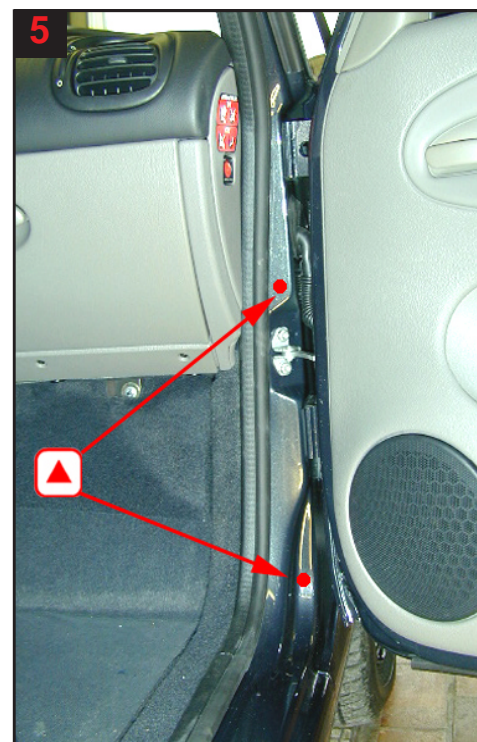
10
Rear door:
3 drill holes for correct treatment. Uppermost drill hole for treatment of top member. See fig 11 for drilling at correct level.



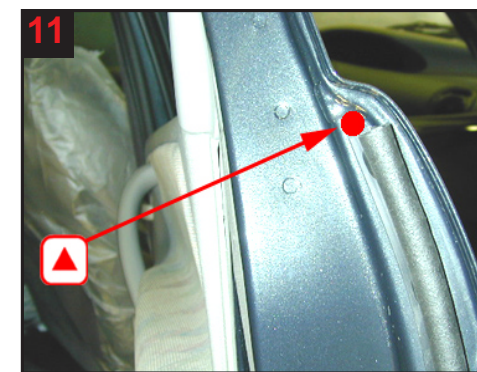
3
Spring strut:
Treat via existing hole and around reinforcement plate.



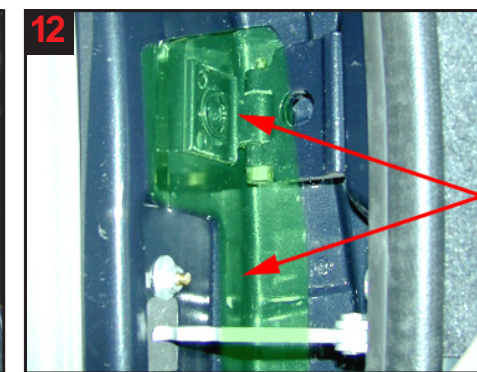
4
Member behind engine:
Treat via existing holes.



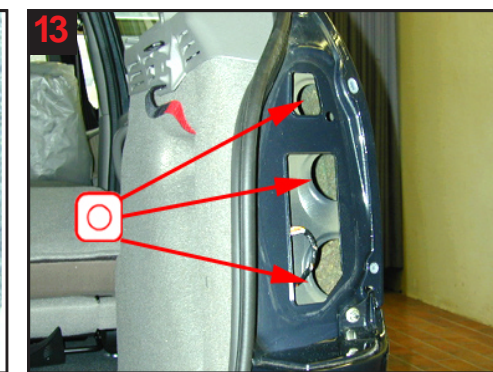
5
B-pillar:
Treat via 2 drilled holes.



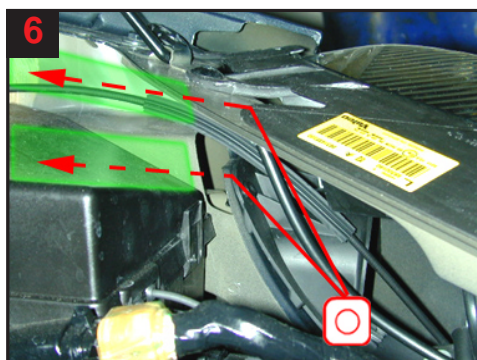
11
Rear door:
Drill 1 hole above rubber strip to treat top member.



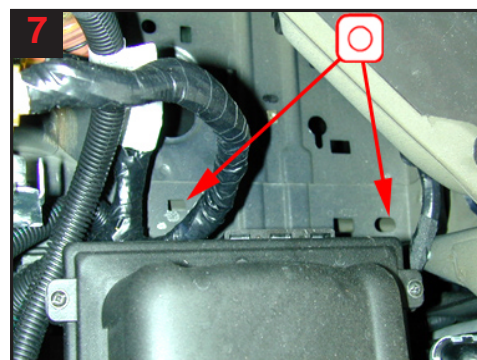
12
Doors in general:
Treat around door hinges.



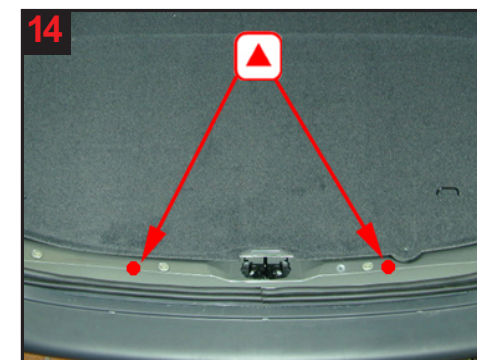
13
Rear wing:
Remove tail light. Treat via existing holes.



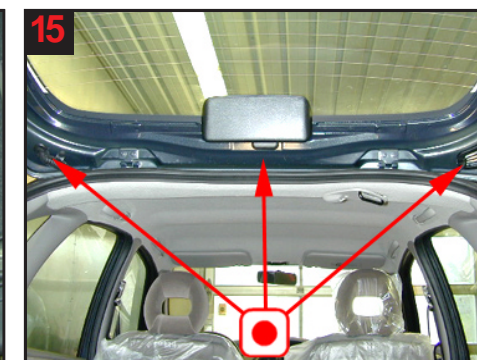
6
Top members in front wing:
Treat via existing hole.



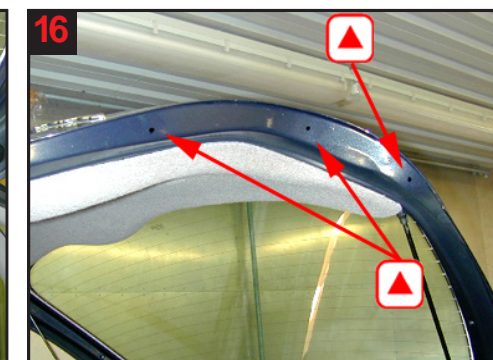
7
Longitudinal member front:
Treat via existing holes.



14
Rear panel:
Remove cover plate. Drill 1 hole right and 1 left.



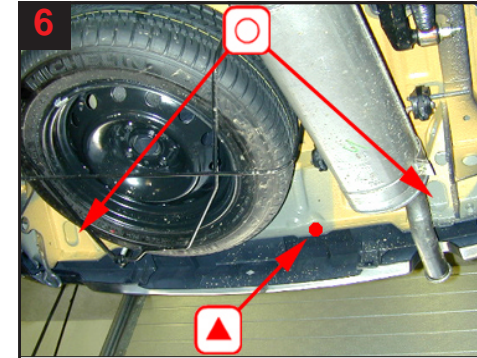
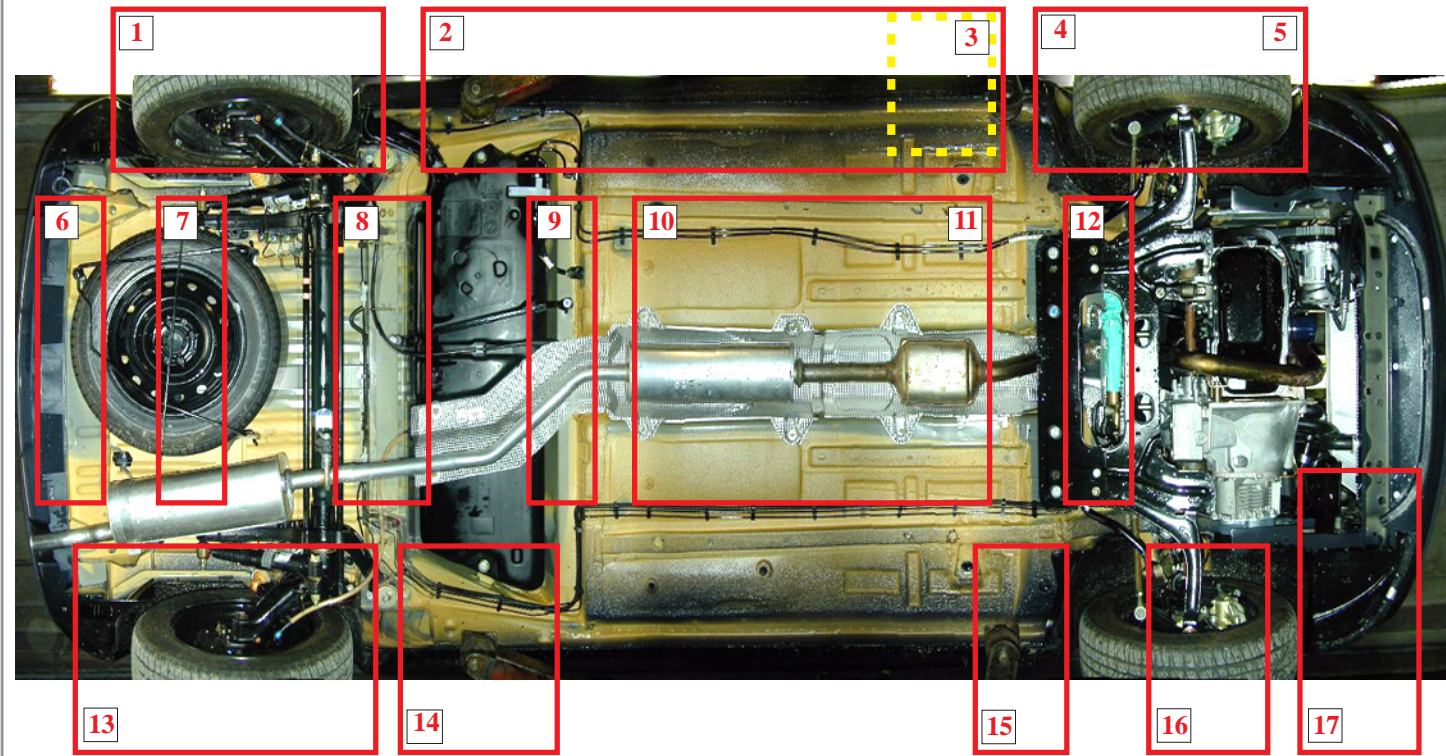
15
Tailgate:
Treat via 3 existing plugged holes.



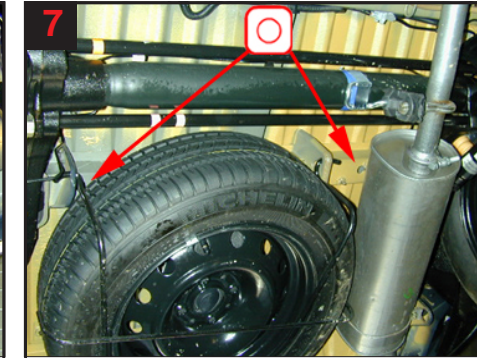
16
Tailgate:
3 drill holes for correct treatment.

Underside

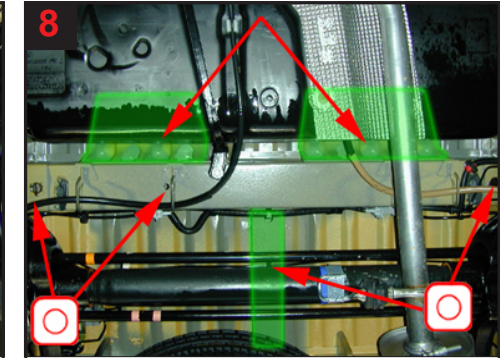
Overview underside



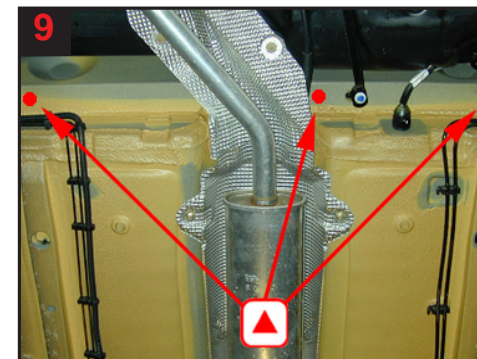
6
Rear panel:
Correct treatment via 1 drilled hole and 2 existing holes.



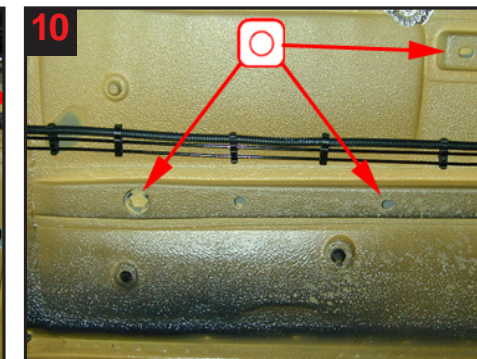
7
Cross member above spare wheel:
Treat via existing holes.



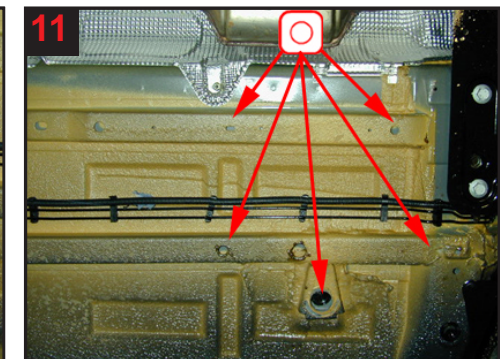
8
Cross member and auxiliary members before tank:
Treat via existing holes.



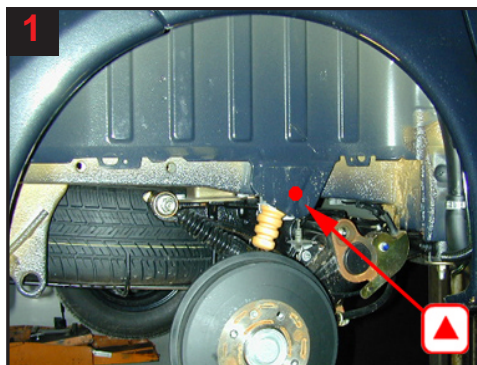
9
Cross member after tank:
Treat via 3 drilled holes.



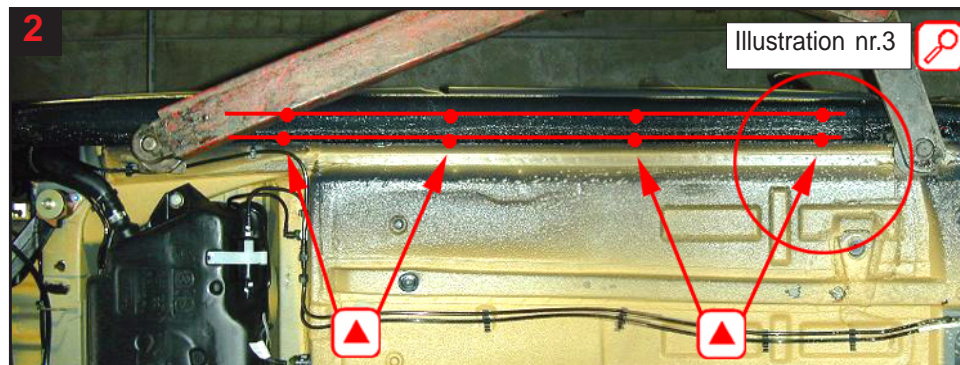
10
Longitudinal members centre rear:
Treat via existing holes.



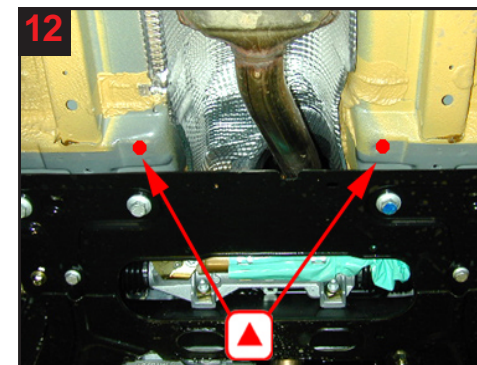
11
Longitudinal members centre and reinforcement:
Treat via existing holes.



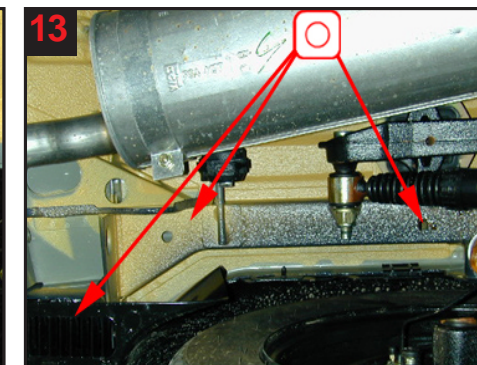
1
Wheel arch rear:
Drill 1 hole in member for stop and behind wheel arch liner where possible.



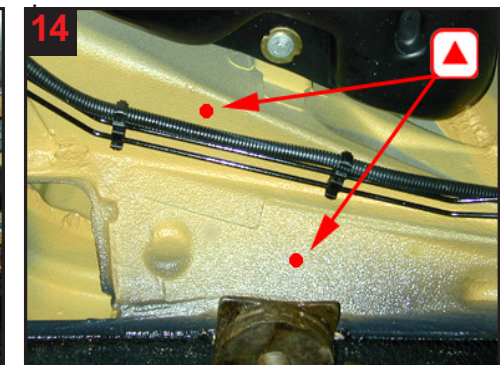
2
Panels:
4 drill holes to treat inner panel and 4 drill holes to treat outer panel. See fig 3 for correct drilling level.



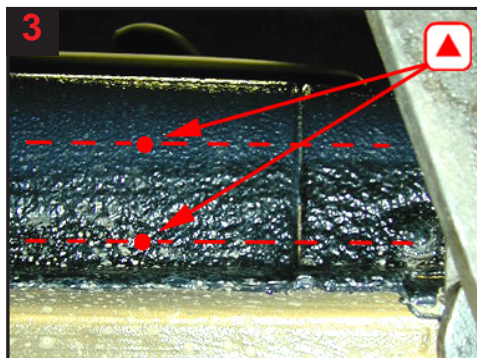
12
Cross member under front axle assembly:
Drill 1 hole in both right and left side for correct treatment.



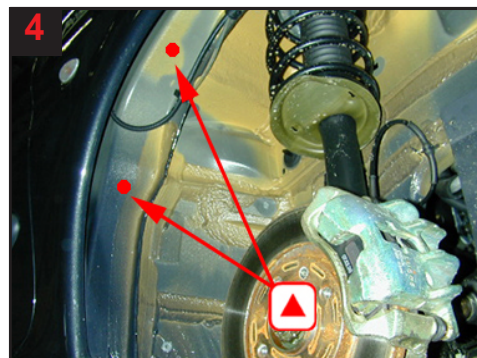
13
Longitudinal members rear:
Treat via existing holes.



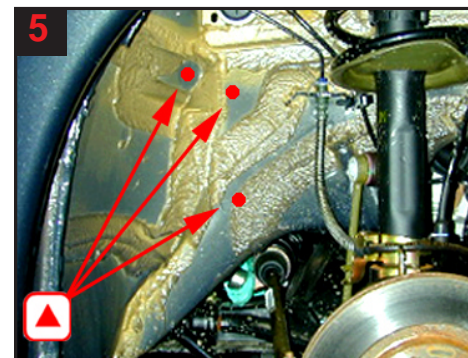
14
Longitudinal member and reinforcement after wheel arch rear:
Drill 2 holes for correct treatment.



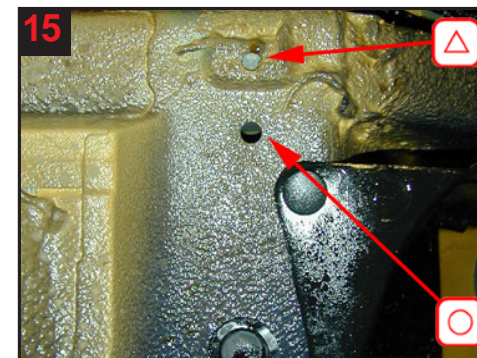
3
Panels:
Fig: drilling at correct level.



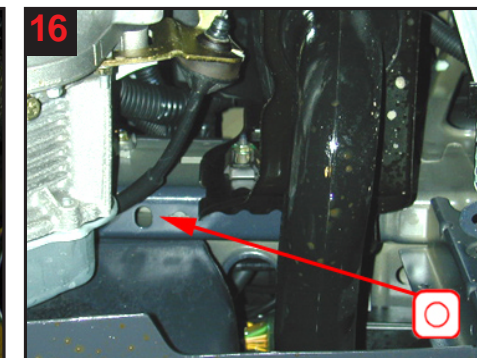
4
Wheel arch front: Remove wheel arch liner for correct treatment. Drill 1 hole in top member and 1 in A-pillar.



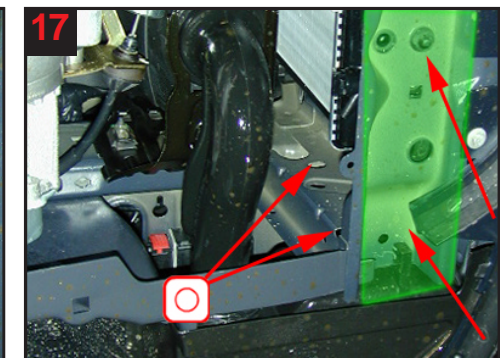
5
Wheel arch front:
3 drill holes for correct treatment.



15
Longitudinal member centre and small cross member: Treatment via 1 drilled hole and existing hole.



16
Longitudinal member front:
Treat via existing hole.



17
Reinforcement by radiator and lower member:
Treat via existing holes.