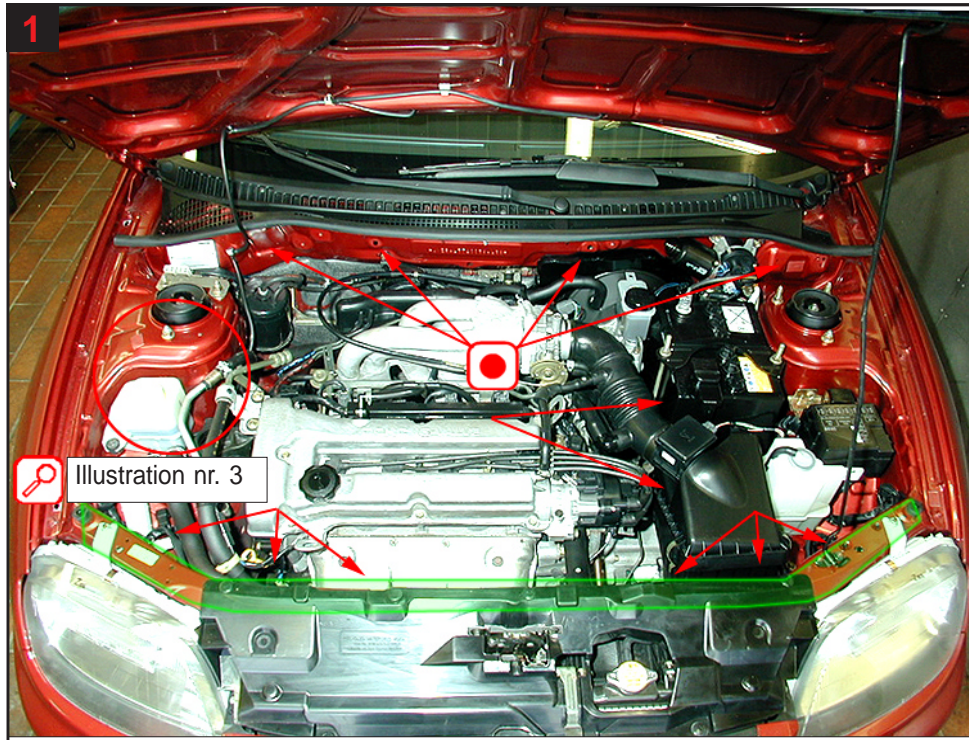


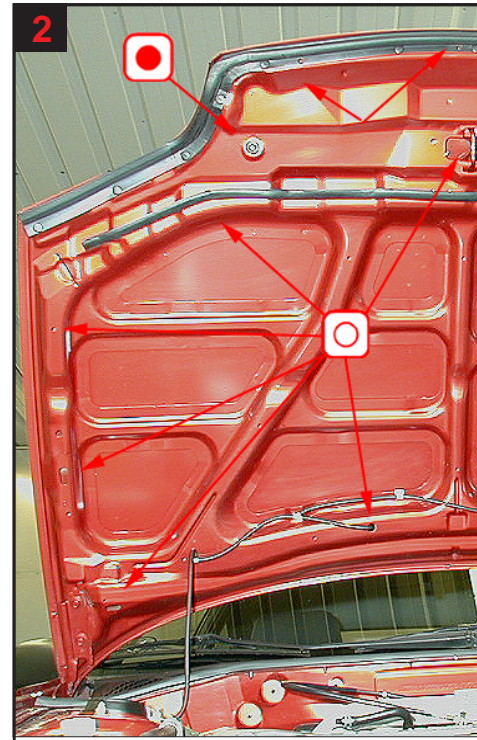


Treatment diagram

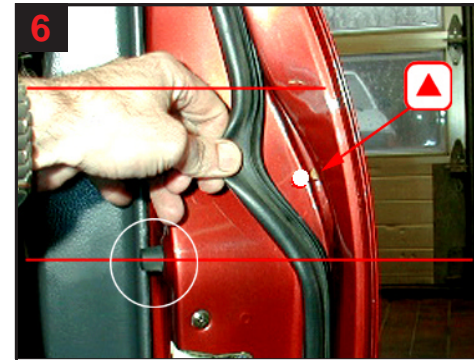
Floor level



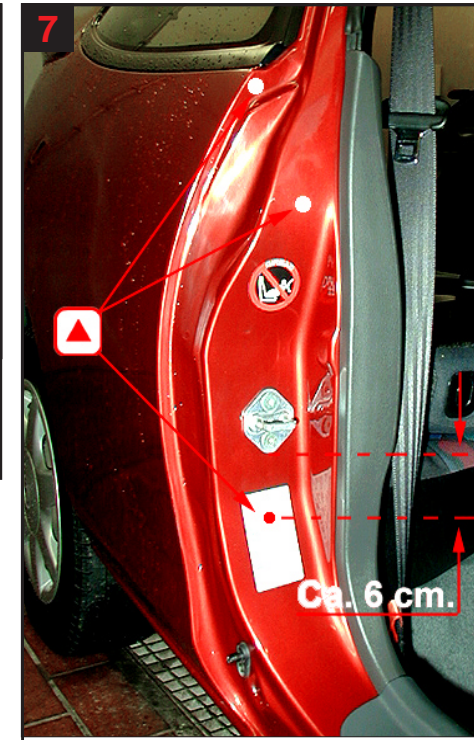
1  
Illustration nr. 3  
Engine compartment:  
Cowl: Treat via existing holes. Treat along top of longitudinal member, reinforcement for engine suspension right side, under airfilter and battery box, behind spring strut and treat bulb holder and locking plate. See fig 3 for correct treatment of top member in front wing.



2  
Bonnet lid:  
Front: Treat via existing and 2 plugged holes.  
Remainder via existing holes.



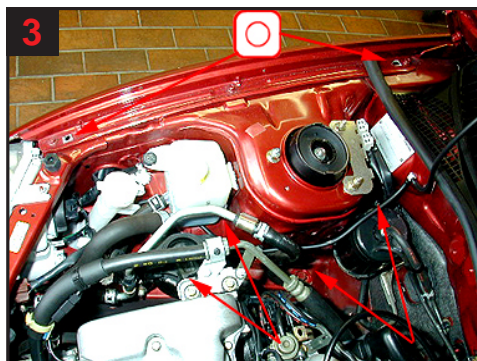
6  
Front door sectional view:  
1 drill hole behind rubber strip. Drill level just above existing plug.



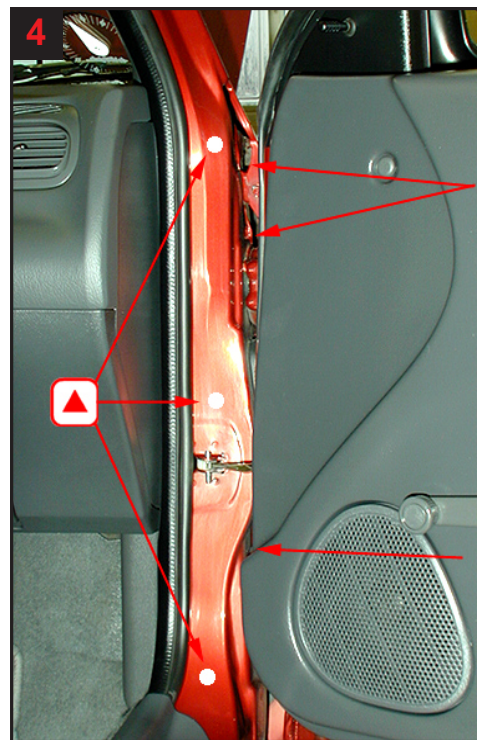
7  
B-pillar and rear wing:  
Drill 3 holes to treat B-pillar and rear wing.  
Drill hole abt. 6 cm below lock mounting.



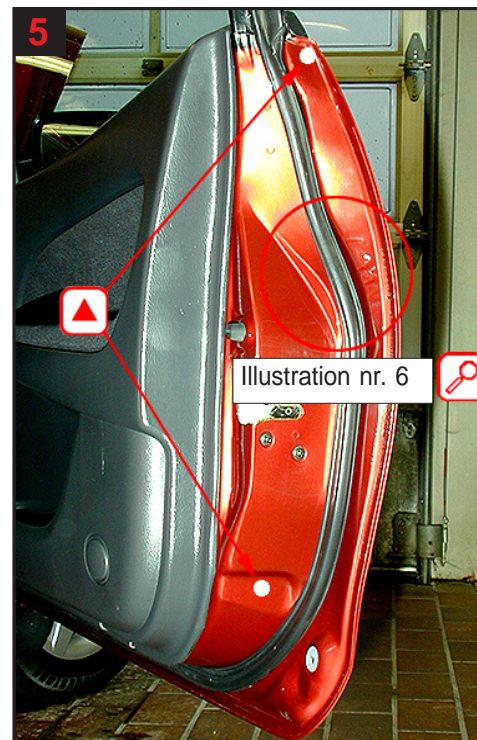
8  
Rear wing:  
Drill 1 hole below mounting for spoiler.  
**Treat with caution.**



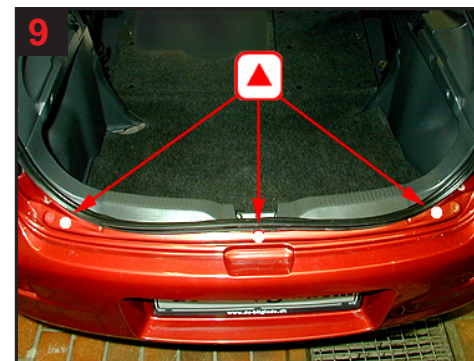
3  
Fig: Treatment of top member. Treat top member via existing holes.



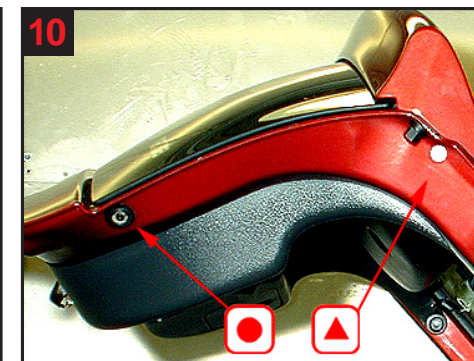
4  
A-pillar/front wing:  
A-pillar: Treat via 3 drilled holes. Front wing: Treat with lance from clearing between A-pillar and wing.



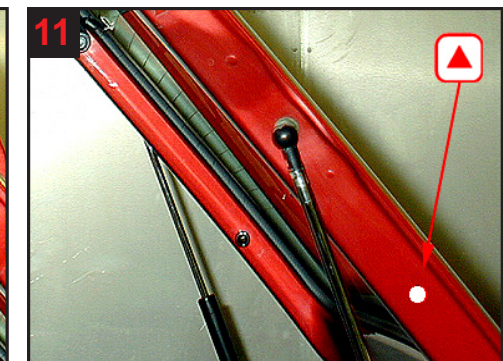
5  
Illustration nr. 6  
Front door:  
Treat via 3 drilled holes. See fig 6 for correct drilling centre.



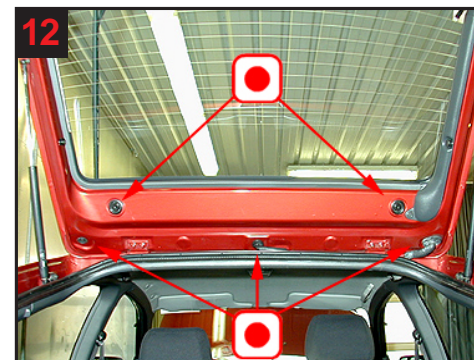
9  
Rear panel:  
3 drill holes for correct treatment.



10  
Tailgate by bumper:  
Treat via 1 drilled hole and existing plugged hole.



11  
Tailgate side:  
Treat via 1 drilled hole.



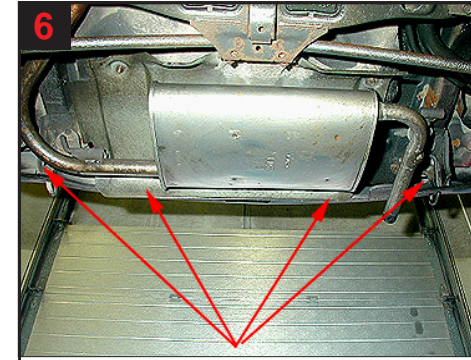
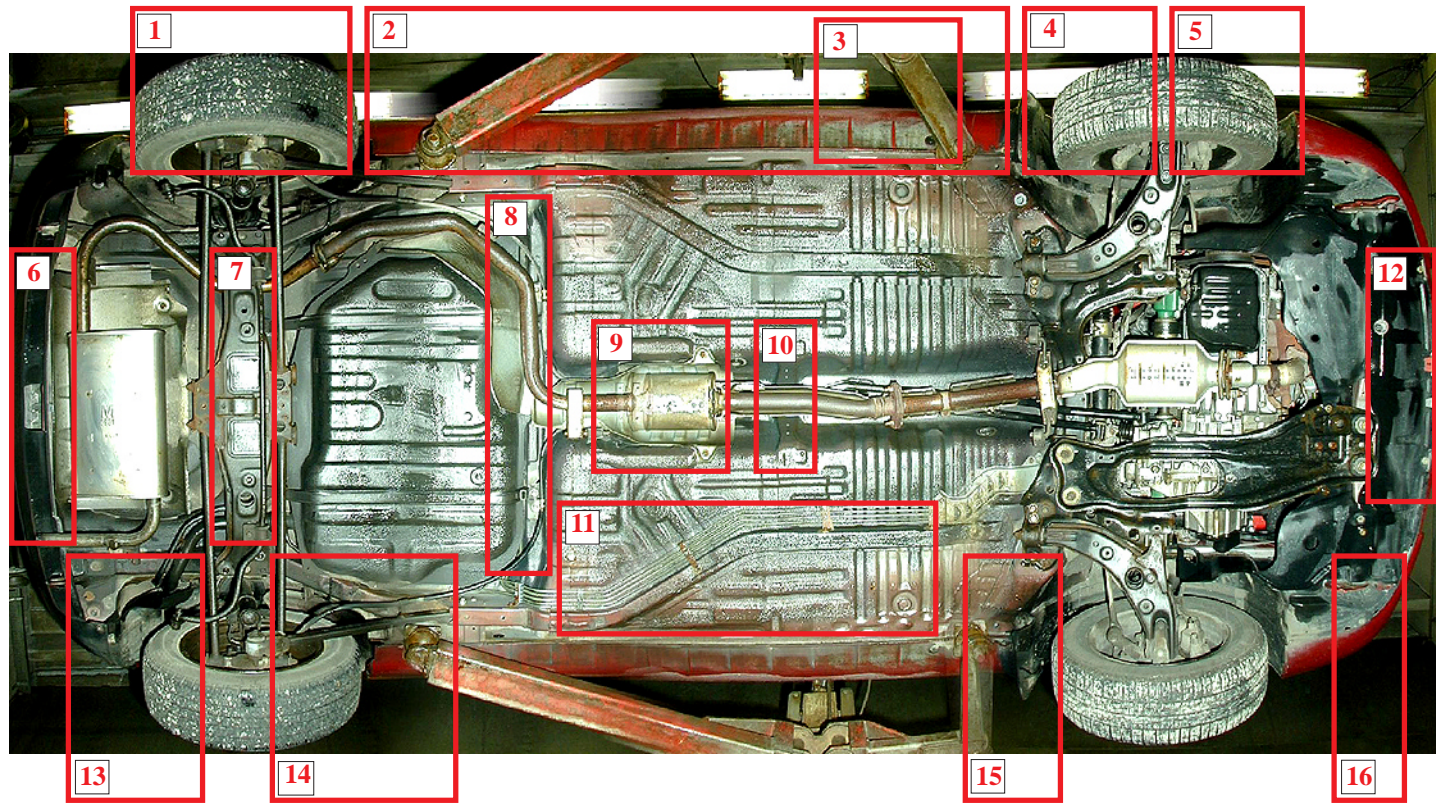
12  
Tailgate by roof:  
Treat via 5 existing plugged holes.



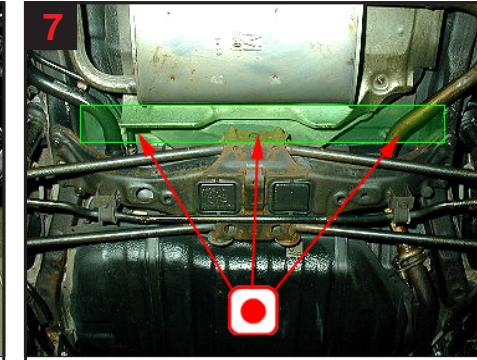


Underside

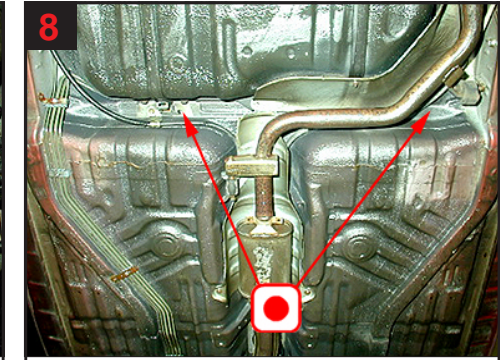
Overview underside



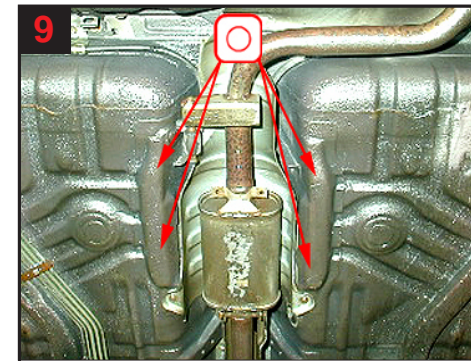
6  
Rear panel:  
Treat via gap between bumper and panel.



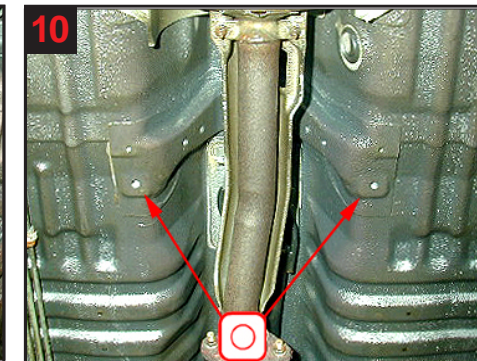
7  
Cross member above rear axle assembly:  
Treat via existing plugged holes.



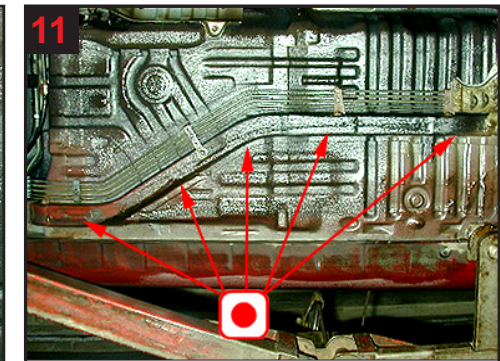
8  
Cross member after tank:  
Treat via existing plugged holes.



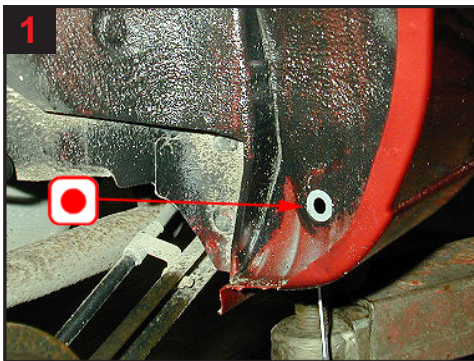
9  
Auxiliary members centre:  
Treat via existing holes.



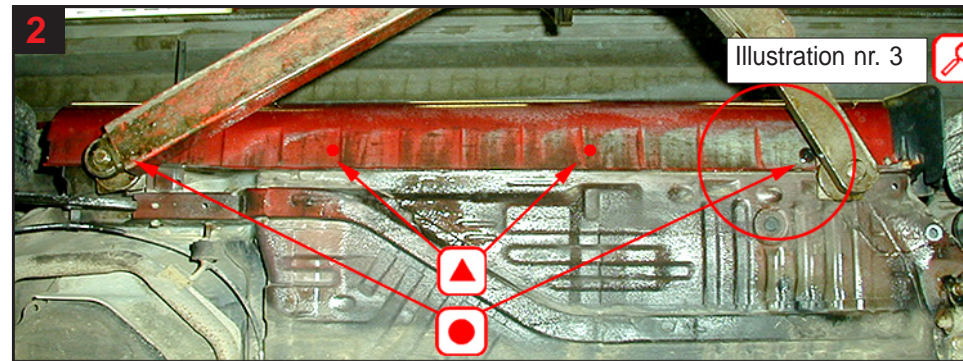
10  
Reinforcement above exhaust:  
Treat via existing holes.



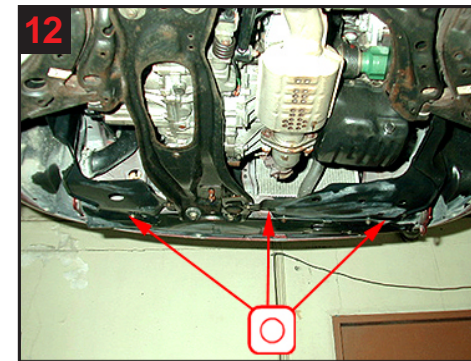
11  
Longitudinal member centre:  
Treat via existing plugged holes.



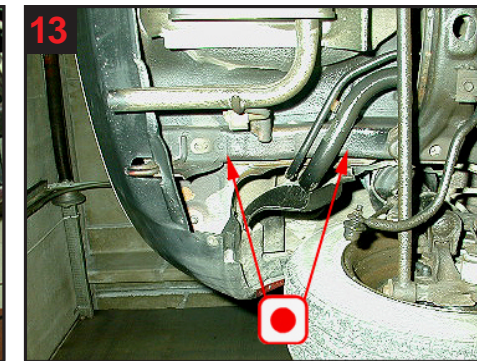
1  
Wheel arch rear: C-pillar/panel:  
Treat via existing plugged hole.



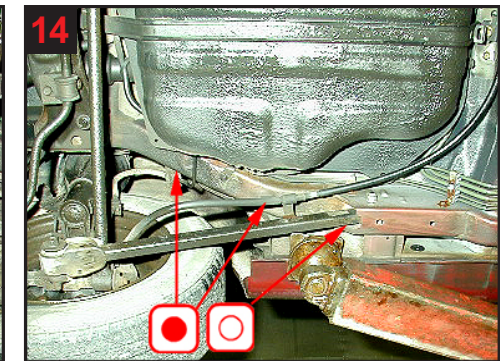
2  
Panel:  
Treat via 2 drilled holes as well as via 2 existing plugged holes. If there is plating for centre panel by holes and plugs drill free hole. See fig 3 for drilling at correct level.



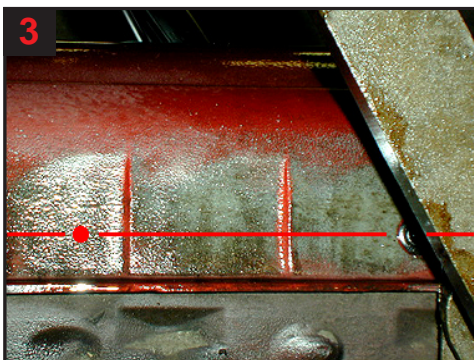
12  
Cross member under radiator:  
Treat via existing holes.



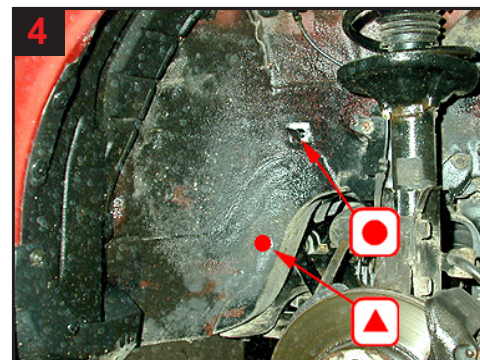
13  
Longitudinal member rear:  
Treat via existing plugged holes.



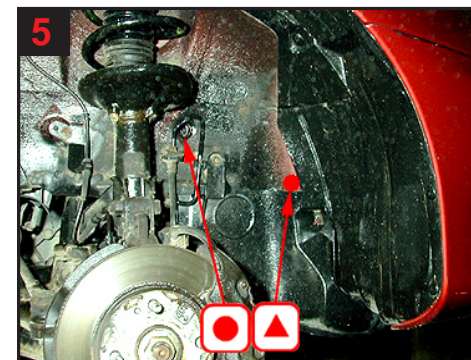
14  
Longitudinal member after wheel arch rear:  
Treat via existing and plugged holes.



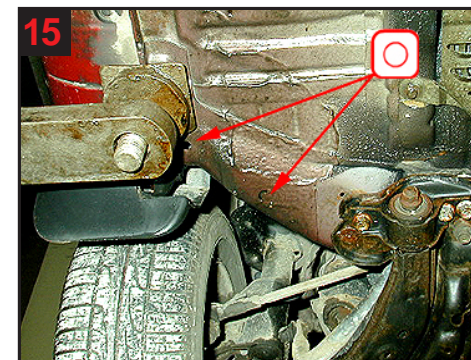
3  
Panel:  
Fig: drilling at correct level. Drill level with existing plugged holes.



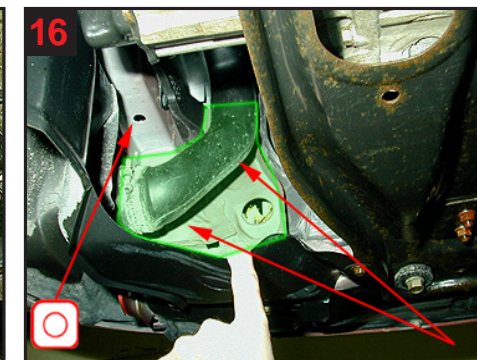
4  
Wheel arch front:  
Treat longitudinal member via 1 drilled hole and existing plugged hole.



5  
Wheel arch front:  
Treat longitudinal member via 1 drilled hole and existing plugged hole.



15  
Small cross member:  
Treat via existing holes.



16  
Longitudinal member front and reinforcement:  
Treat area and existing holes.